



Reporting from RSLinx Classic

XLReporter generates Excel based reports from Rockwell Software® RSLinx® Classic using the current process values in the PLC.

The purpose of this document is to describe how to set up RSLinx Classic for **XLReporter**.

Process Values

XLReporter can take snapshots of the process values and add them to an existing report worksheet, periodically or on event. To prevent excessive build-up of information in a single worksheet, new workbooks and worksheets can be created automatically.

XLReporter supports data retrieval from any RSLinx Classic version that provides the RSLinx OPC Server. This includes:

- RSLinx Classic Single Node
- RSLinx Classic OEM
- RSLinx Classic Gateway

In order to access the RSLinx OPC Server from a remote machine, you must use RSLinx Classic Gateway.

Before you Begin

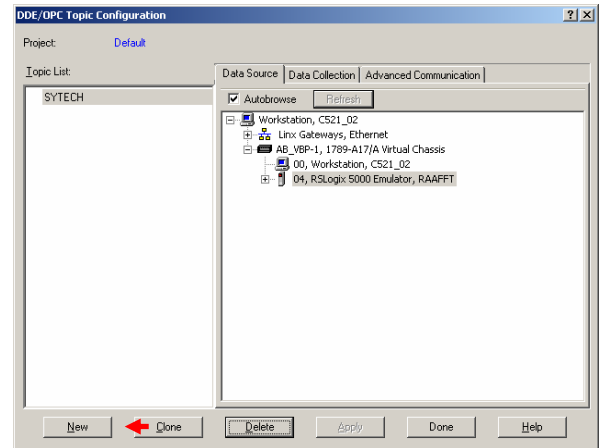
In order for **XLReporter** to communicate with RSLinx Classic, the machine where **XLReporter** is installed must also have the OPC core components installed. The OPC core components are provided in the tools folder of the **XLReporter** install CD or from www.OPCFoundation.org.

If **XLReporter** is installed on a PC that is remote to RSLinx Classic then a number of settings need to be configured on both the server and client machines. This includes having matching Windows user accounts on both machines and enabling DCOM on the machine where RSLinx Classic is installed.

For a detailed explanation of what is needed, please read the OPC Training Institute document *OPC_and_DCOM_5_things_you_need_to_know* that is provided in the Tools folder of the **XLReporter** install CD or from www.TheReportCompany.com.

Defining a DDE/OPC Topic

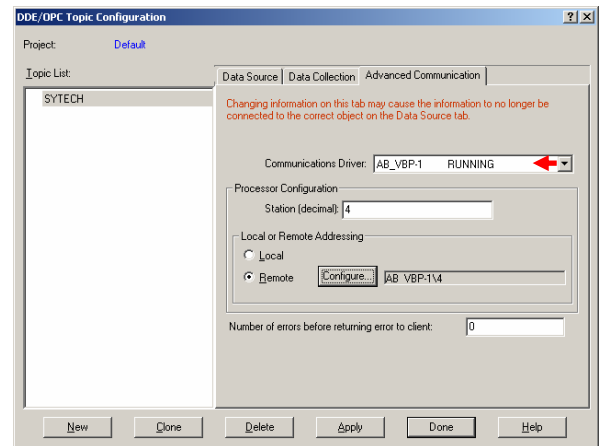
XLReporter accesses data from RSLinx Classic using a OPC Topic. Open the **RSLinx Control Panel** and select **DDE/OPC, Topic Configuration**.



DDE/OPC Topic Configuration

Select **New** and enter a name for the topic and browse to the target device for this topic. Click **Apply**.

On the **Data Collection** tab specify the **Processor Type** and the settings on the **Advanced Communication** tab.



DDE/OPC Topic Configuration – Advanced Communication

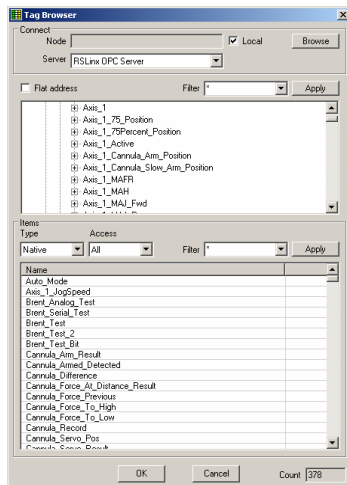
Click **Done** when finished.

If RSLinx Classic Gateway is being used, a remote computer that has no installed Rockwell Automation products will have access to the PLCs.

Verifying the OPC Server

To verify that the OPC Server is functional, open **XLReporter's Project Explorer**, from the **Tools** menu start the **System Check** application and select the **Real Time** tab. Select the top row under the Tag Name column and click the pushbutton named (...) to open the **Tag Browser** window.

If **XLReporter** is installed on the same node as RSLinx Classic, browse for local servers otherwise browse for remote servers on the node specified.



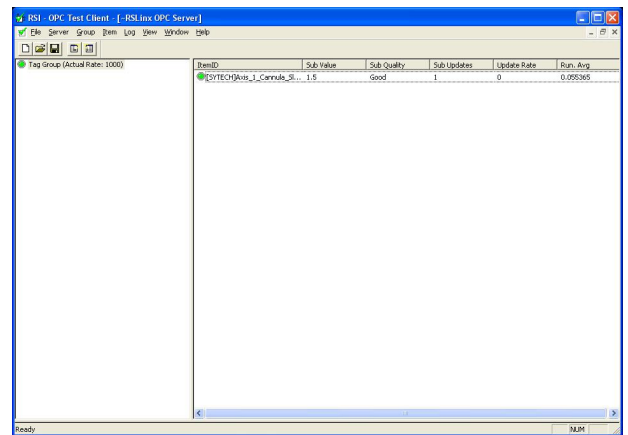
Real Time System Check

To connect to RSLinx Classic, the **Server** should be set to *RSLinx OPC Server* or *RSLinx Remote OPC Server* depending on if the server is local or remote. Select one or more tags and verify that they update with the current value.

Troubleshooting

If you are experiencing issues connecting to or retrieving data from RSLinx with **XLReporter**, you can use the OPC Test Client provided by Rockwell Software to test the OPC server.

The **OPC Test Client** is opened from the **Rockwell Software** program group under **RSLinx, Tools, OPC Test Client**.



OPC Test Client

To connect, select **Server, Connect**. This opens the **Select an OPC Server** window. Choose *RSLinx OPC Server* and click **OK**.

Select **Group, Add Group**. Enter a **Group Name** and click **OK**.

Select **Item, Add Item** to open the **Add OPC Item** window. Select a tag by navigating in the lower left list, selecting a tag on the lower right list and clicking **Add**. When finished, click **Done** to return to the **OPC Test Client** window.

All of the selected tags appear along with their real time values, type, quality, and timestamp.

If at any point you experience an issue with this client, it is an indication that there is something wrong with the RSLinx server, since now two OPC clients have demonstrated issues.

At this point, contact Rockwell Software technical support to troubleshoot and correct these issues.

Rockwell Software, RSLinx are registered trademarks of Rockwell Automation, Inc.